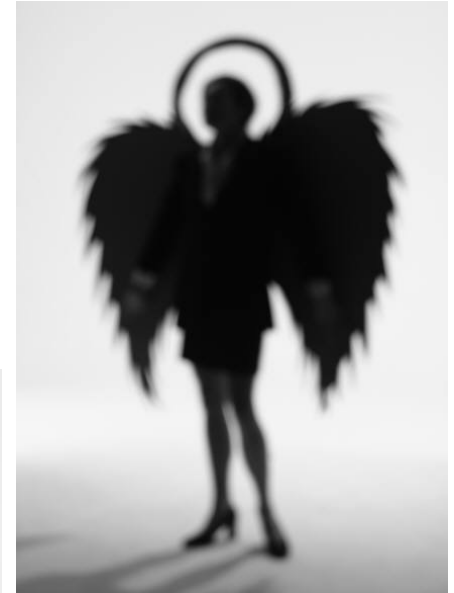


CHARACTER REPORT CARD

[1](#)[2](#)[3](#)[4](#)[5](#)[6](#)[Next](#)

Questions to answer:

- 1) What are five qualities that best define your literary character?
- 2) How will you justify the grade you give them?



THE ASSIGNMENT:

[1](#)[2](#)[3](#)[4](#)[5](#)[6](#)[Next](#)

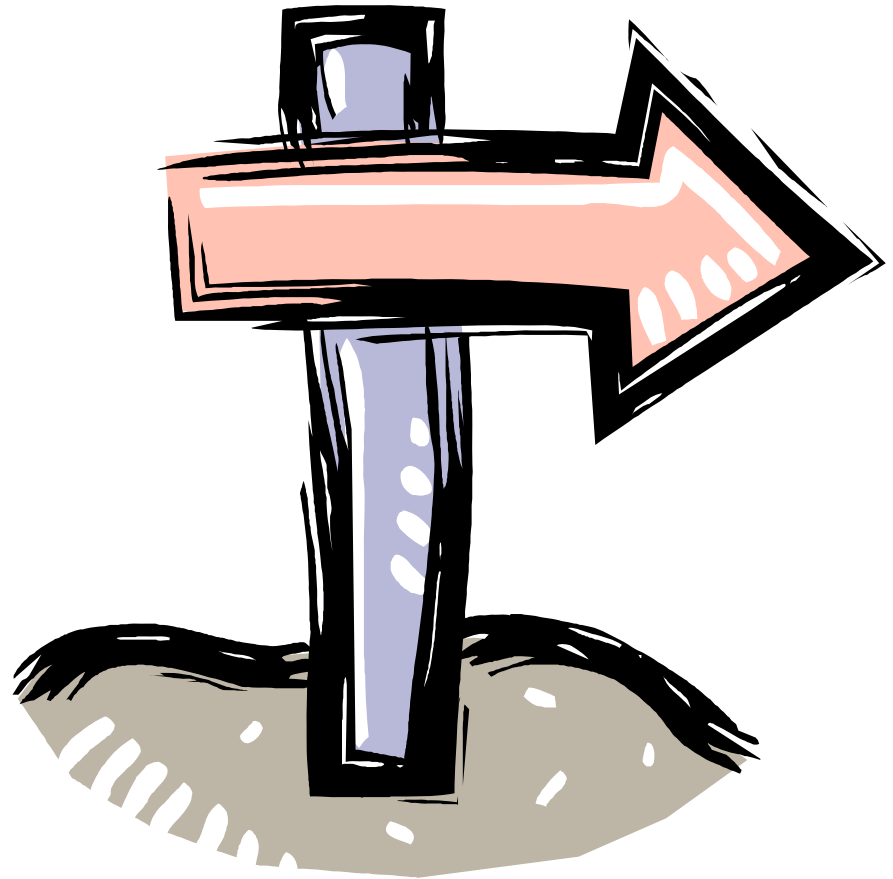
Today, you will have the opportunity to create a report card for one character based on their traits that are revealed to you throughout the book.

When you are graded, you want to know why you received the grade you did. Therefore, grade each characteristic based on textual evidence and provide commentary.



Directions:

- 1) Pick 5 traits that can define your character accurately.
- 2) Locate textual evidence to show each trait exhibited by your character.
- 3) Write commentary to support how the trait helps to define their character.
- 4) Give them a grade based on the amount of textual evidence that supports that trait.



Character Report Card

[1](#)[2](#)[3](#)[4](#)[5](#)[6](#)[Next](#)**Character Trait****Grade****Textual Evidence****Commentary****(EXAMPLE)****Tough****A+**

“My body slammed into boulders, and my clothes were ripped and torn by the bare trees, as I held onto the sled flying down the mountain side.” page 95

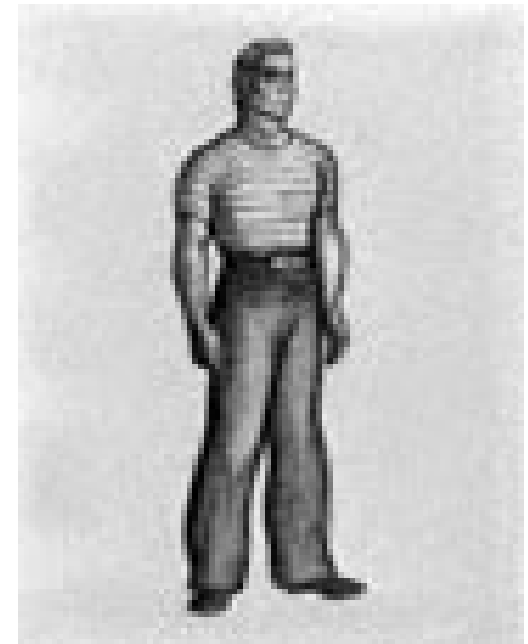
Gary is a very tough person since he was able to hold on to the sled during that scary experience during the first day of the race. Throughout the book, Gary displays his tough side by overcoming the challenges he faced during the race.

CHARACTER SKETCH

Draw a large picture of your character. Answer the following questions using textual evidence to support your answer. Write your answer in call-out bubbles that connect to the character.



1. What did they say?
2. What did they do?
3. What do they think?
4. What do they have and wear?
5. Where are they?
6. Who do they associate with?
7. What do others say about them?



<http://20k.com/pages/content/production/sketches/sketches.html>

<http://20k.com/pages/content/production/sketches/sketches.html>

Teacher Support Materials

§110.23. English Language Arts and Reading, Grade 7.

(12) Reading/text structures/literary concepts. The student analyzes the characteristics of various types of texts (genres). The student is expected to:

(F) analyze characters, including their traits, motivations, conflicts, points of view, relationships, and changes they undergo (4-8)

